

Version: Final
Approved date: 2020
Review date: May 2023

The British School of Gran Canaria

Accessibility Plan

Policy Document



THE BRITISH SCHOOL OF GRAN CANARIA

ACCESSIBILITY PLAN POLICY

1. Scope

This Accessibility Plan applies to all staff and students within the British School of Gran Canaria and all visitors to the school within the school during normal school hours. This Accessibility Plan is drawn up in compliance with current legislation and requirements as specified in Schedule 10 of the Equality Act 2010, relating to Disability, and “The Equality Act 2010 and Schools – Departmental advice for school leaders, school staff, governing bodies and local authorities” (Department for Education UK, May 2014).

According to the Equality Act 2010 a person has a disability if:

- a) He or she has a physical or mental impairment, and
- b) The impairment has a substantial and long-term adverse effect on his or her ability to carry out normal day-to-day activities.

The accessibility plan must be used in conjunction with the school’s Learning Support Policy.

2. Definitions

Throughout this document the following words, terms and phrases have the following meanings:

Staff – adults who are employed and work within The British School of Gran Canaria.

Normal school hours – refers to the school day which runs from 8.45am to 3.35pm, but also includes Enrichment time after the end of the school day from 3:50-4:50pm.

BSGC – The British School of Gran Canaria

Pupils – synonymous with students.

3. Rationale

BSGC aims to provide a welcoming, supportive, and emotionally and physically secure learning and working environment for every member of the school community. BSGC recognises and promotes human rights, and values the diversity of culture, beliefs, practices, customs, physical and intellectual abilities and life experience of the whole school community.

4. Our commitment

BSGC aims to provide an environment that enables full curriculum access for all pupils, staff, parents and visitors regardless of their education, physical, sensory, social, spiritual, emotional and cultural needs. We are committed to taking positive action in the spirit of the Equality Act 2010 with regard

to disability and to developing a culture of inclusion, support and awareness within the school. This school is enriched by and celebrates the diversity of our whole school community. We work hard to ensure there are no invisible children here, recognising everyone's uniqueness and success. Provision for disabled pupils at BSGC is closely connected with the provision for children with special educational needs. The school recognises and values parents' knowledge of their child's disability and its effect on their ability to carry out everyday activities and respects the parents' and child's right to confidentiality.

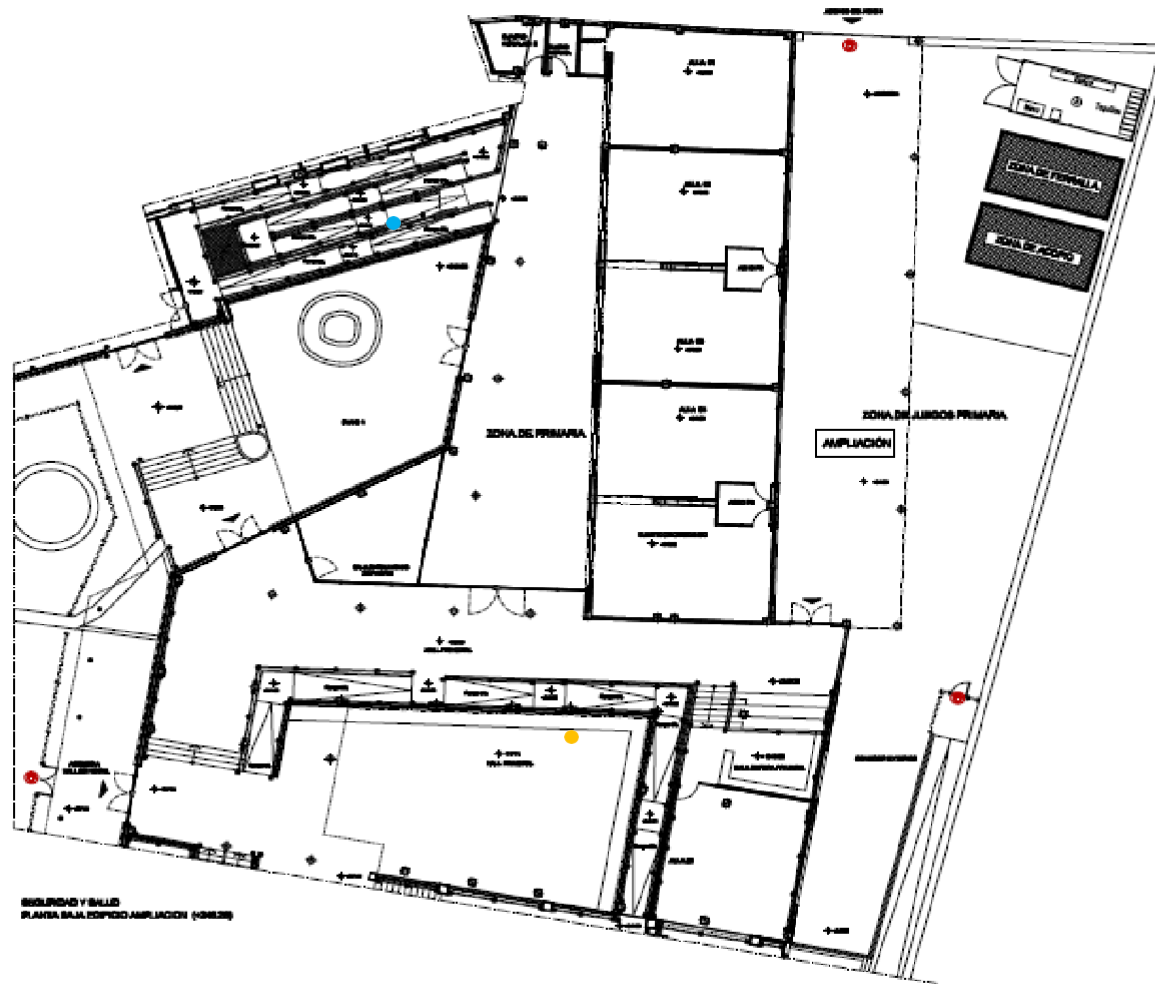
5. Current provision – Tafira Site

During the academic year 2014-2015 the school buildings underwent substantial refurbishment to improve access and facilities for all pupils, staff and visitors. Ramps were installed to provide wheelchair access to amenities and classrooms on all floors. A lift accesses all floors. There is a toilet with wheelchair access on the first floor. (Appendix 1)

6. Current provision – South Site

The south school has ramp access to the main building via the main entrance. There is a lift that enables access to the first floor. There are toilets with disabled access on both floors of the building. (Appendix 2)

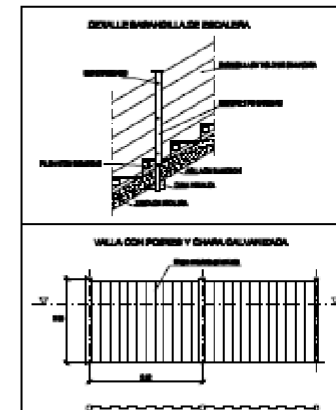
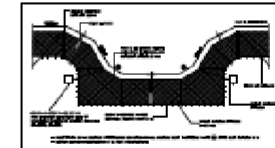
Infant classrooms - second floor



SEGURIDAD Y SALUD
PLANTA SALA ESPICIO AMPLIACION (04/2018)

SIMBOLOGIA

	BARRERA DE PROTECCION CON AISLAMIENTO SONORO, ESCALERAS Y BORNES DE PASADIZOS
	MALLA (OJO) ANTIPROTECCION DE ALUCOS
	MALLA CON POSTOS Y GRAPA GALVANIZADA
	RED DE PROTECCION PRIMARIA POR ABERTURAS EN PISO Y PARED DE RED CON MALLAS DE POLIURETANO
	USO DE PASADIZOS DE EMERGENCIA
	ABIERTO Y VENTILADO

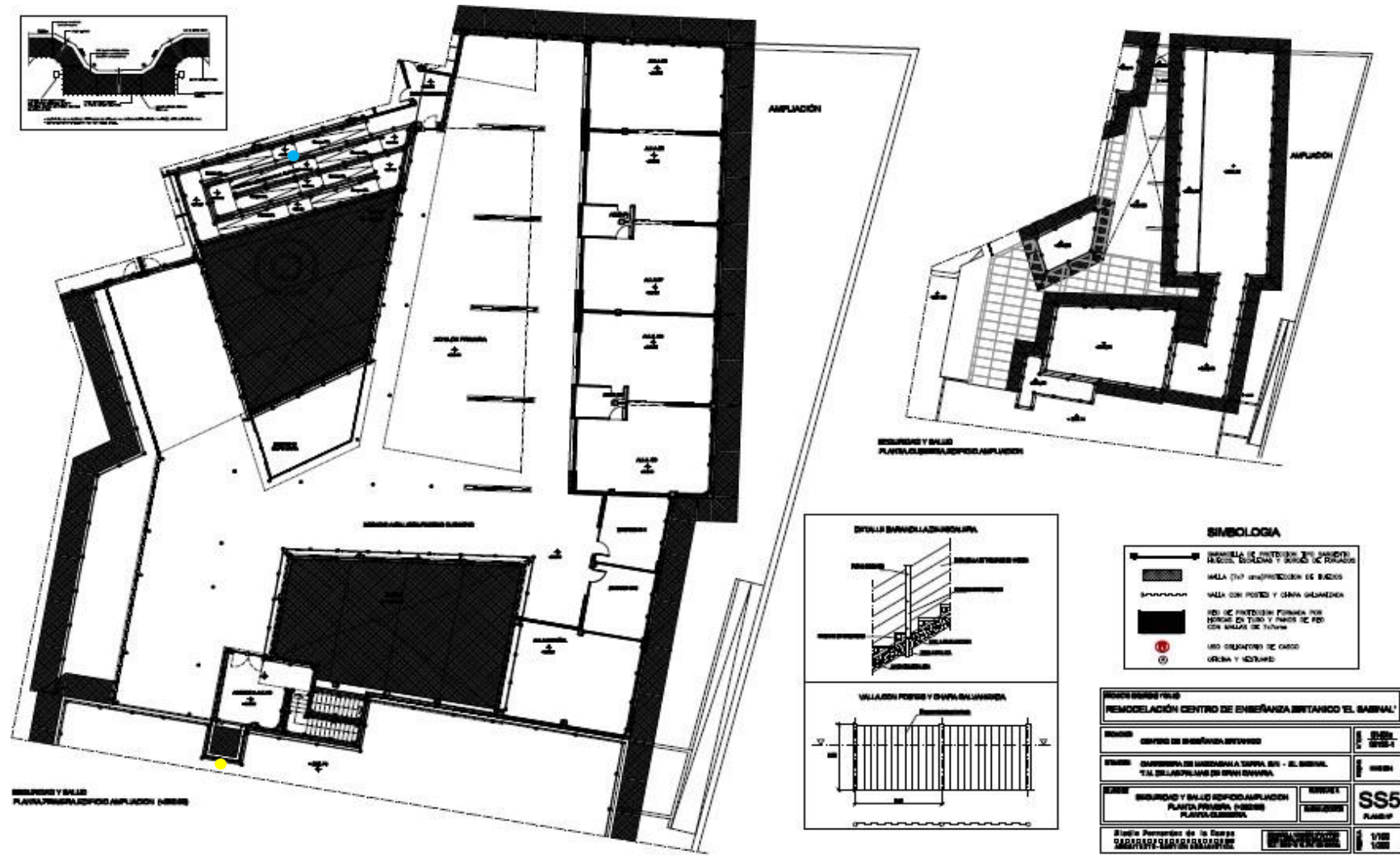


PROYECTOS		REMODELACION CENTRO DE ENSEÑANZA BRITANICO EL SABINAL	
PROYECTO	CENTRO DE ENSEÑANZA BRITANICO	NO. DE PROYECTO	00181-T
UBICACION	CARRETERA DE MATEHERRERA TIERRA, EN - EL SABINAL, TLA. DE LOS RIOS DEL ESTADO DE QUERETARO	USO	EDUCATIVO
CLIENTE	SECRETARIA DE SALUD ESTADO DE QUERETARO PLANTA SALA (04/2018)	ESPECIE	SS4
		REVISIONES	PLANTA P
Escala: Formato de la Carta		ESCALA: 1/100	

● Ramp to fourth floor and infants

● Ramp to third floor

Primary classrooms – fourth floor



- Lift to all floors
- Ramp to second floor

Appendix B - South Site

